

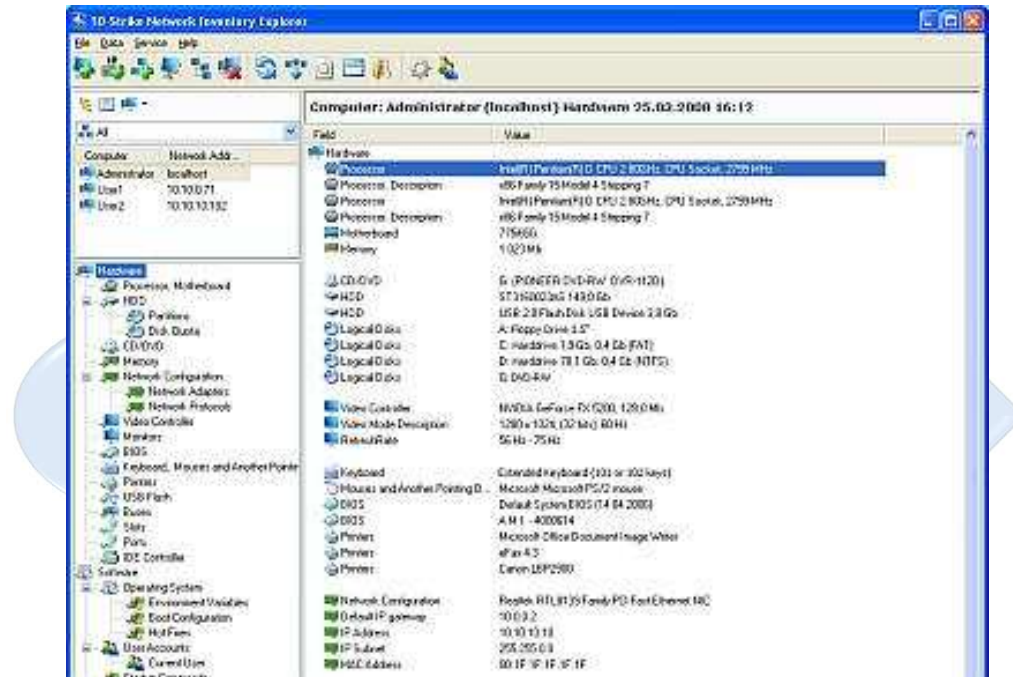
## Network Inventory Explorer

Inventory network computers' hardware with **Network Inventory Explorer!**

Create inventory database with the hardware installed on remote computers: CPU, memory size, hard drives, partitions, CD/DVD drives, videocards, USB flash drives, etc.

**The program is installed on administrator's computer only**, uses *WMI technology* for scanning hardware and software, and does not require any additional components on users' computers.

You can view hardware configuration on network computers remotely, track and watch configuration changes, generate various reports.

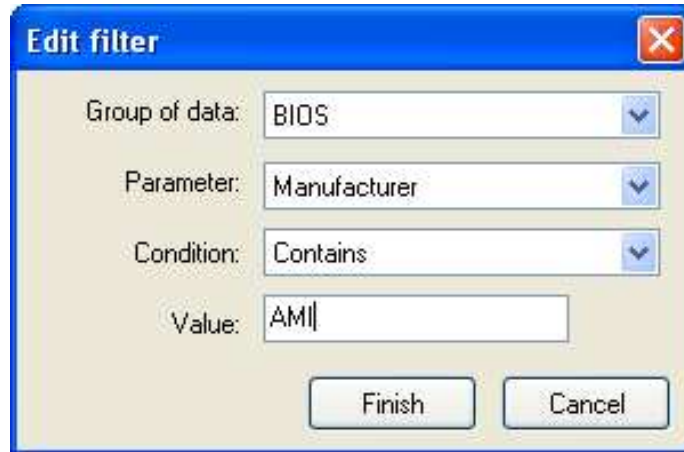


The program collects the following data on network computers' hardware:

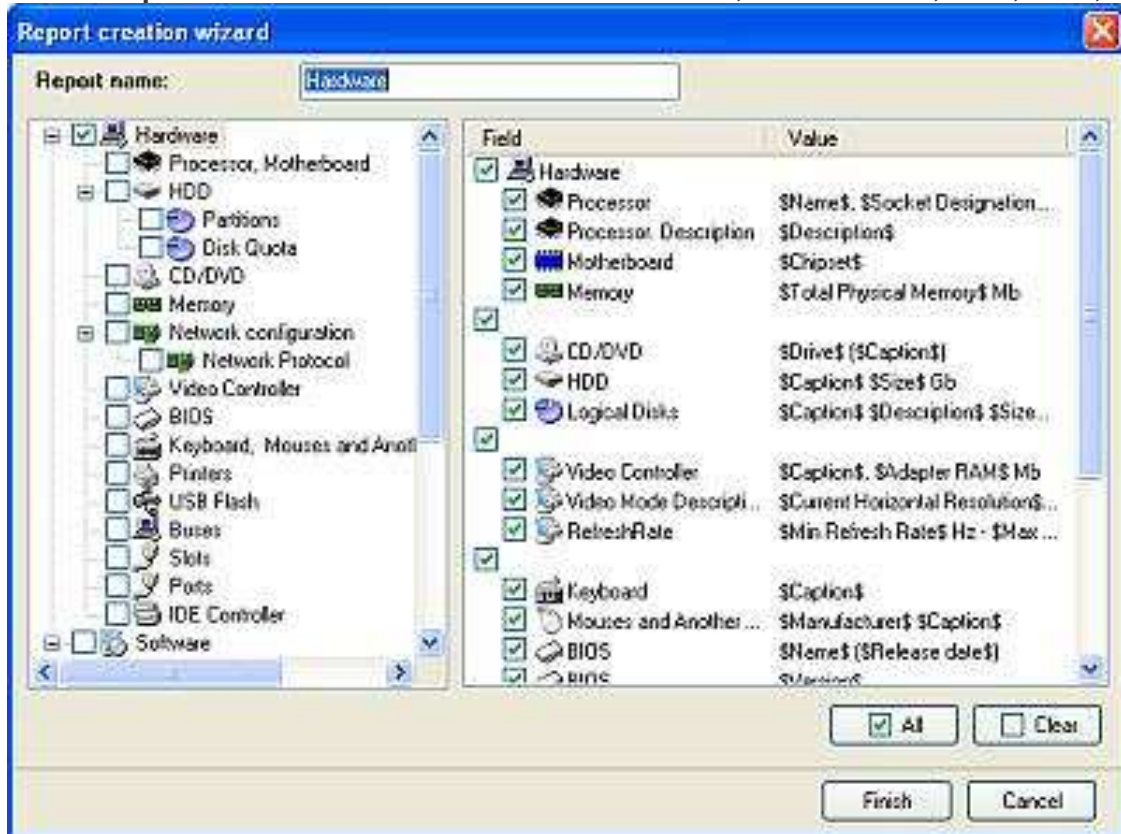
- processor
- mainboard
- RAM
- hard drives (HDD)
- CD/DVD drives
- USB flash drives
- video adapter
- network adapter
- slots
- printers
- BIOS
- mouse
- keyboard, etc.

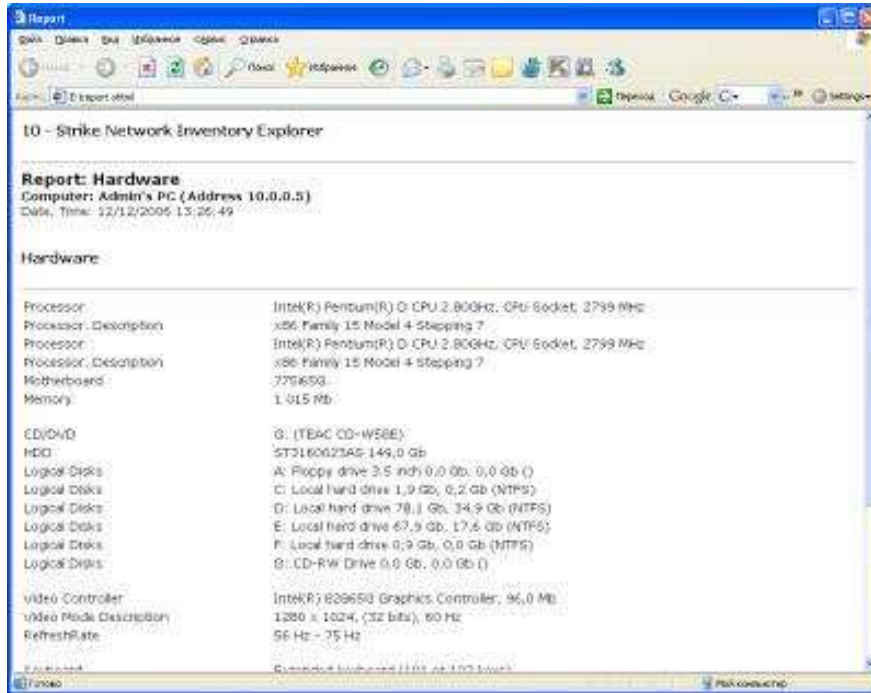
**Network Inventory Explorer** contains powerful **report generator** which allows creating hardware reports in various file formats for single computers or for a group of computers. With its help, you can:

- **Create reports on the availability of particular hardware** installed on network computers.

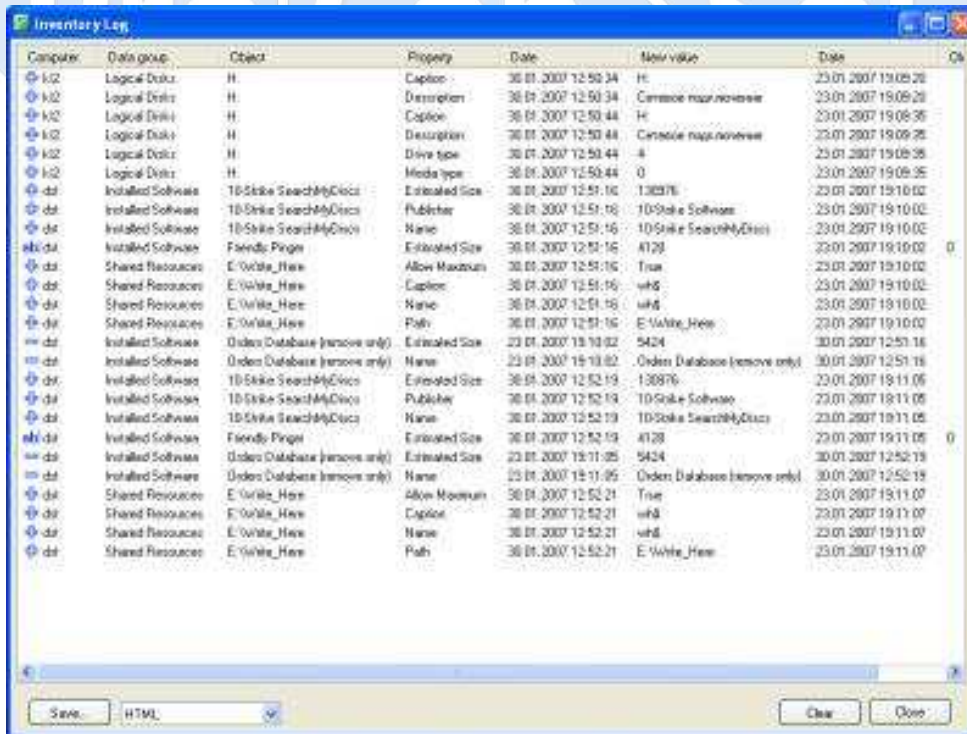


- **Create reports on installed hardware:** installed CPUs, motherboards, HDD, RAM, etc.





The program **audits hardware changes** and writes them to inventory log.



For your SOFTWARE requirements contact us [sales@proconsol.co.za](mailto:sales@proconsol.co.za) or 076 584 6662